



BACK OF ENVELOPE - MAILING PANEL



FRONT OF ENVELOPE



NEWSPAPER INSERT INSIDE ENVELOPE

NOVEMBER 2021

FOREVER BRIGHTER™

KENT STATE UNIVERSITY®

WHAT SETS US APART IS HOW WE COME TOGETHER

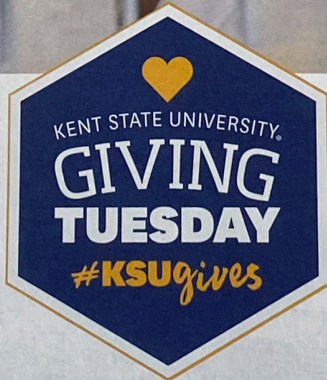
GIVING TUESDAY SHINES BRIGHT!



Your generosity sets the world alight

Giving Tuesday is set to be bigger and better than ever this year! Early in October, Kent State launched *Forever Brighter*, the university's most ambitious campaign to date, with a goal of raising \$350 million.

Often referred to as Kent State's most generous annual tradition, **Giving Tuesday runs Nov. 1-30** and empowers donors to make



their gifts go even further. Funds featured during Giving Tuesday have matching dollars available, meaning that most gifts end up being doubled.

Other giving incentives are also available throughout the month to help supporters make the greatest impact possible. If you're thinking of making a gift to Kent State in support of students or programs, there's no better time than this November!

Please join our effort to make the world *Forever Brighter*. Mail in your gift with the enclosed card and envelope or give online at www.kent.edu/givingtuesday.



Building the Future

Redefining what is possible when our physical spaces can support the transformative experiences happening at Kent State University.

PAGE 3



Expanding University Initiatives

Seizing the opportunity to continuously evolve and change the way people think, learn, compete and teach.

PAGE 3

NEWSPAPER INSERT - FRONT



NEWSPAPER INSERT - FRONT



NEWSPAPER INSERT - INSIDE



NEWSPAPER INSERT - BACK

Letter to the Editor

Dear Editor,

What does it mean to leave the world **Forever Brighter**, and why is Kent State University in a position to do so?

When I began my presidency, I already knew Kent State University was special. Then the pandemic hit. Time and time again, I saw examples of this community's unique capacity for unfailing kindness, compassion and generosity, exemplifying how "Flashes Take Care of Flashes."

Today, I am more convinced than ever of the brilliance within each Golden Flash and of our collective power to change the world for the better. It is my great pleasure to announce the public phase of Kent State University's **Forever Brighter** comprehensive fundraising campaign.

Never before in the history of our university have the needs of our students been greater; never before has philanthropic support been more urgent. The three primary objectives of **Forever Brighter** are **Prioritizing Student Success**, **Expanding University Initiatives** and **Building the Future**. Within each of these priorities are programs and projects focused on improving student experiences.

To date, we are more than 75 percent of the way to our overall goal of \$350 million. This is our most ambitious campaign ever, and I am certain we will succeed for one simple reason: **At Kent State University, what sets us apart is how we come together.**

- Todd Diacon, Ph.D.
President, Kent State University



Scan this code with your phone to make a gift to your favorite Giving Tuesday featured fund.

PRIORITIZING STUDENT SUCCESS



Thanks to support from the Last Dollar Scholarship, Ciana White, '21, earned her degree

Though *Forever Brighter* includes three main areas of focus, our top priority continues to be the success of all students at Kent State University. Raising funds to align with that goal ensures we support our students from the day they receive their letter of acceptance to the day they receive their degree.

When she was one semester away from graduation, Ciana White, '21, realized her dream of a college degree was at risk. Over the years, she and her mother had worked together to foot the tuition bill and keep her moving toward her goal. But finances had become tighter than ever, and they didn't know how they would make that final tuition payment.

The finish line was so close, and Ciana could not bear to give up. She contacted a staff member in the College of Communication and Information, who directed her to the Last Dollar Scholarship. She received the award and was able to register for her last classes.

"I didn't think I was going to get to graduation. I'm very proud of myself. It's kind of mind-blowing to me," she said.

Ciana, a diligent and hard worker, knows the value of a dollar. She

said that all her life, she has been scraping pennies together to accomplish her goals. As a student, Ciana worked at the Kent State University Library circulation desk and had an internship with the City of Kent State. She is grateful for donors and the opportunities their support provides.

"I just want to say thank you for helping students like me continue our education. We're trying to go out into the world and make it a little better."

After graduating with a Bachelor of Science in public relations, Ciana went on to attend the American University in Washington, D.C. to pursue a master's degree in political science. She hopes to be a press secretary for a politician she believes in, someone who will make a difference for others.

Scholarships empower our students to pursue their degrees and accomplish their dreams.

BUILDING THE FUTURE

Kent State University's College of Aeronautics and Engineering and College of Business Administration continue to see increases in enrollment.

Both colleges attract top students from around the region, nation and globe; however, in order to best serve these students, we need physical spaces and equipment

that match the innovative and transformative experiences we offer. Plans for a new College of Business Administration building include modern facilities to encourage active, hands-on learning in all disciplines throughout the college. A building expansion for the College of Aeronautics and Engineering will provide the necessary space for the engineering program's dramatic increase in growth.

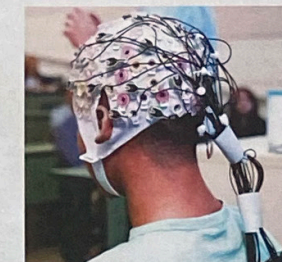
We aren't just laying the foundation for better buildings; we are setting the groundwork for tomorrow's leaders in aeronautics, engineering and business to develop a brighter future for us all.



Rendering of the proposed expansion for the College of Aeronautics and Engineering

EXPANDING KSU INITIATIVES

Research and programmatic additions to the university, such as the Brain Health Research Institute (BHRI) and the Design Innovation Initiative, have elevated our reputation and cemented our place on the world stage. As we continue to evolve, we are focused on brain health, design innovation, intercollegiate athletics and endowing employee talent. These initiatives impact students in a very real way.



BHRI demonstration

After participating in the Summer Undergraduate Research Experience (SURE) Program, Nathan R. decided to pursue a double major: mathematics and neuroscience.

Nathan quickly uncovered another passion while working with Dr. Lique Coolen in her neuroscience lab. The Brain Health Research Institute, one of Kent State's key initiatives, is a collaborative effort that taps passionate faculty members from various disciplines throughout the university to solve brain-related challenges.

Under Dr. Coolen's mentorship, Nathan's research focused on

individuals with spinal cord injuries and how to improve their quality of life. As a BHRI Fellow, he had the opportunity to work in a lab where he could pursue his academic interests instead of taking on a part-time job that was unrelated to either of his majors.

"This experience helped me learn where I belong and that I want to make a difference in the world."

Forever Brighter FACTS

32%

of freshmen in the Class of 2024 are the first in their family to go to college

19

consecutive semesters with Athletics Department GPA of 3.0+

82%

of students need financial assistance to attain degrees

CLASSIFIEDS

GIVING OPPORTUNITIES

LOVE TO TRAVEL? SO DO OUR STUDENTS...

Studying abroad can be a life-changing experience for a student, but finances often get in the way. For some students, even securing a passport to participate is daunting. With the newly established Project Passport Fund from the Office of Global Education, any student from any major can apply for a free passport and step-by-step help through the process.

For as little as \$145, you can grant a student access to the world and all it has to offer.

Give today at www.kent.edu/givingtuesday

FOOD DRIVE

ALL MONTH LONG

Kent State and The University of Akron are competing to see who can contribute the most to a joint food drive effort. Students and alumni are welcome to participate.

Non-perishable food items can be dropped off at Campus Kitchen on the Kent Campus, Tri Towers Rotunda, 2nd Floor, 44242.

Winner will be announced Nov. 20 at the Wagon Wheel game in Akron.

FOREVER BRIGHTER PIN

In honor of our campaign launch, any donor who gives \$100 or more during the month of November will receive a limited-edition Forever Brighter pin.

Show your support today and give now! www.kent.edu/givingtuesday



KENT STATE UNIVERSITY WORD SEARCH

G T S A L I G H T Q U D O N O R
G A D I T O G E T H E R S B R I
O L L I A N T A T K G E N T S T
L E T A N I M U L L I I A T E B
D W P U R P O S E H V A R T S L
E E T S G O L D U S I A P B A A
N R T I I S H O W W N E C O M C
F O R E V E R B R I G H T E R K
L E T O E G E T H E T R K E R S
A L I S H I N E B L U E C K R Q
S Y E M C I L L E R E C A T R U
H E T H G H K E N T S T A T E I
E I R B R E O V E R D O F D L R
S T U D E N T L R O A W E H T R
K A M E W R E H A T Y E G O T E
H E L K R A P S L R E I N A D L

Find the listed words in the diagram. They run in all directions - forward, backward, up, down and diagonally.

- ALIGHT FOREVER BRIGHTER KENT STATE
BLACK SQUIRREL GIVING TUESDAY SCHOLAR
BLUE GOLD SPARK
BRIGHT GOLDEN FLASHES STUDENT
DONOR ILLUMINATE TOGETHER



The battle continues - November 20

ARTS

WICK POETRY CENTER TRAVELING STANZAS

Share your voice by contributing to the community poem, "Some Days" - a collaboration that honors the vital work of our caregivers.

Learn more and contribute at www.communitypoems.travelingstanzas.com/somedays

LOUD & PROUD

Fight on for KSU! Fight for the Blue and Gold! We're out to beat the foe; fight on brave and bold! Fight on for victory, don't stop until we're through, We're all together, let's go forward, KSU!

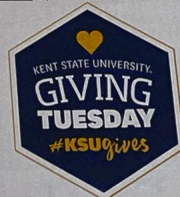
BIRD SEEKING FRIENDS

27-year-old giant bird seeking friends. Strong, silent type. Tall, feathered and handsome mascot extraordinaire is true blue with a heart of gold. Preference for fellow mascots who enjoy showing school spirit. Must love black squirrels, sports and higher education!

If interested, please contact Brian Grubich of The Golden Flashes Club.



Please join our effort to make the world Forever Brighter. Scan the code with your phone or visit www.kent.edu/givingtuesday



NEWSPAPER INSERT - BACK

Remittance card with fields for amount, allocation, and company name. Includes 'Thank you for making our future Forever Brighter' and 'Double the impact of your gift!' text.

REMITTANCE CARD AND BRE ENCLOSED